



WI-FI CHRONOTHERMOSTAT



Perry's chronothermostats and thermostats range is expanded with the new smartphone chronothermostat.

Simple to use: the system, always connected to Internet through the Smartbox, can be viewed and programmed by smartphone, tablet or PC.

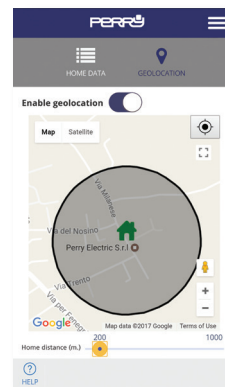
Advanced features:

- **Geolocation:** allows to reduce the programmed temperature leaving home.
- **Energy consumption reading:** the energy meter transmits energy consumption in real time.
- **Versatile:** works with any kind of system (floor, radiator or fan coil) with ON / OFF or proportional mode.
- **Opening windows:** automatic suspension of operation when a temperature variation of 2 ° C is detected in X minutes, then controlling the stability of the environment in order to restart the system.



GEOLOCATION

The Wi-Fi chronothermostat adjusts the temperature intelligently by lowering it by an adjustable X ° C, depending on the distance (up to a maximum of 5 ° C) when leaving the house and raising up when returning.



Wi-Fi chronothermostat configuration does not require complex operations, just an Ethernet cable!

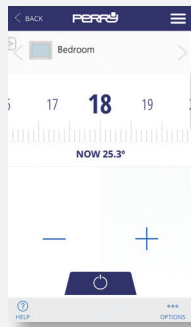


*EXPANDABLE (up to 30 devices):

- It is possible to divide the real estate unit into multiple thermal zones by adding additional chronothermostats for valve control on the distribution manifold.
- You can add energy meters (optional).



Zone display



Single zone control



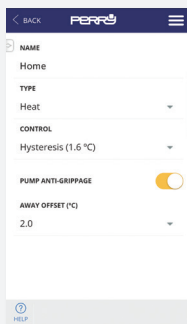
Zones programming

TOTAL CONTROL

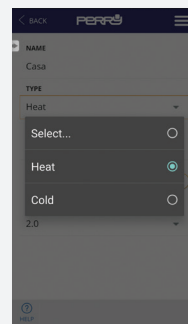
Through APP, it is possible to control and configure completely the system.

FLEXIBLE

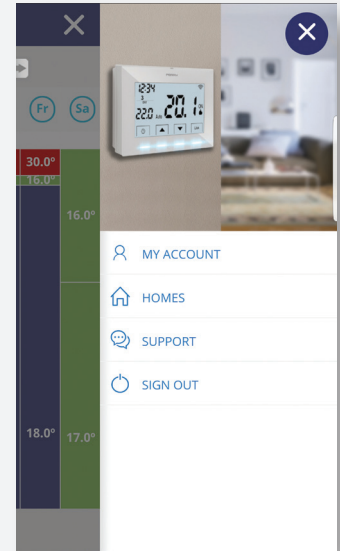
Suitable for any type of installation and requirement



Setup



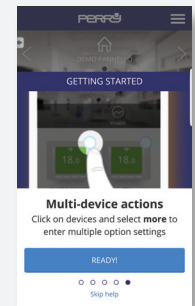
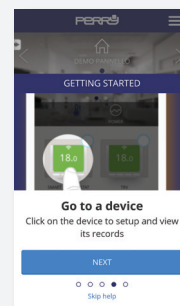
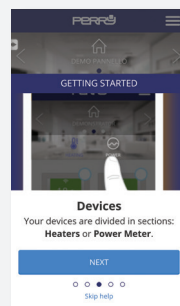
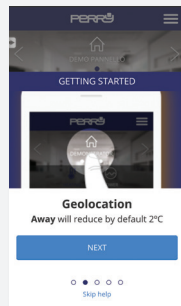
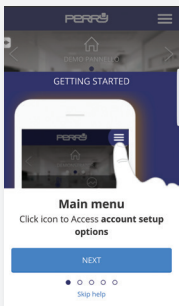
Controlled plant choices



User Identification

EASY

Integrated Application Guide in APP



Programming menu, instruction manual



FULL GLAZED SURFACE EFFECT

The special plastic finishing makes possible a pleasing "glass" effect.



LED BACKLIT SCREEN

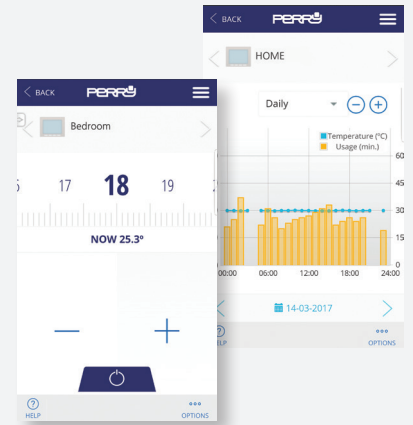
The 4.3 "LCD display is optimized for displaying and reading information even thanks to the white backlit.



TEMPERATURE MONITORING



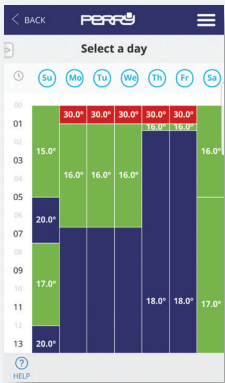
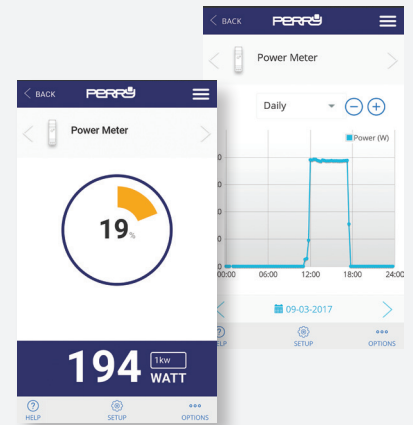
Real-time monitoring and programming, of multiple homes, is possible both from APP for iOS and Android, and from the portal www.perryhome.it



ELECTRIC CONSUMPTION MONITORING



The 1TX ME01 WiFi Energy Meter allows to monitor the electrical consumption by APP or browser.



CONSUMPTION UNDER CONTROL

The "Perry Chronothermostat" App shows the temperatures with the visual indication of consumption through 3 colors: the green color means low consumption up to 18 degrees.



Under 18.0 ° C, the green color will indicate low consumption



Between 18.1 ° C and 21 ° C the blue color will indicate optimum consumption



From 21.1 ° C the red will indicate a consumption beyond the requirements

THE PERRY ELECTRIC WI-FI CRONOTHERMOSTAT, POWER SUPPLY 3V (**230V NOT REQUIRED**) ALLOWS TO REPLACE QUICKLY AND EASILY THE TRADITIONAL THERMOSTATS.



1TX CR028WIFI optimises home energy consumption





1TX CR028WIFI

Wi-Fi Chronothermostat

- Wireless connection to Smartbox
- Equipped with backlit LCD with "White-LED" technology
- Glazed effect surface finishing for a modern design
- Easily programmable through the APP available for both Android and iOS
- Weekly programming
- 3V battery power
- Connects directly to the boiler

Power supply:	3V-2x1.5V AA (alkaline)
Operation:	ON / OFF or proportional mode
Differential:	adjustable 0.2-0.4-0.8-1,6°C with ON / OFF operation
Control time	10/15/20/25 minutes with proportional mode
Temperature levels:	up to 10 levels of temperature per day
Temperature:	adjustable accuracy of 0.5 °C
Command:	summer / winter
Minimum programming time of 1 minute	
Transmission:	868 MHz RF
PCB antenna:	build-in
Programmable events up to 10 per day	
AWAY function with temperature reduction from 0 to 5°C compared to programmed temperature	

SPECIAL NOTES

Anti-limestone operation with pump control Low
Battery signaling

1TX RX01WIFI

Smartbox

- Connected via Ethernet to the router
- No configuration required
- Does not require a computer
- Powered by a micro USB adapter
- Handles data collected from various connected devices
- Connected to cloud sends data, downloads weather information and messages
- Each home requires a Smartbox

Power supply:	external 5V 500 mA
Consumption:	300 mA
Connection:	RJ45 for Ethernet
Indications by LED	
Transmission:	868 MHz RF
PCB antenna:	build-in

1TX ME01WIFI

Power meter

- Measures and collects datas on electricity consumption in real time
- 1 DIN module

Power supply:	200-260V, 50 Hz
Consumption:	0.65-0.9 W
Indications by LED	
Transmission:	868 MHz RF
PCB antenna:	build-in



1TX CR028WIFIKIT

Starter Kit

The ready-to-use solution to adjust the temperatures of your home directly from your smartphone.
The kit includes the 1TX CR028WIFI chronothermostat and the Smartbox 1TX RX01WIFI.



PERRY ELECTRIC s.r.l.
Via Milanese, 11 - 22070 Veniano - CO - ITALY
T. +39 031 8944.1 - Fax +39 031 931848
www.perry.it - export@perry.it